



Transform the Enterprise

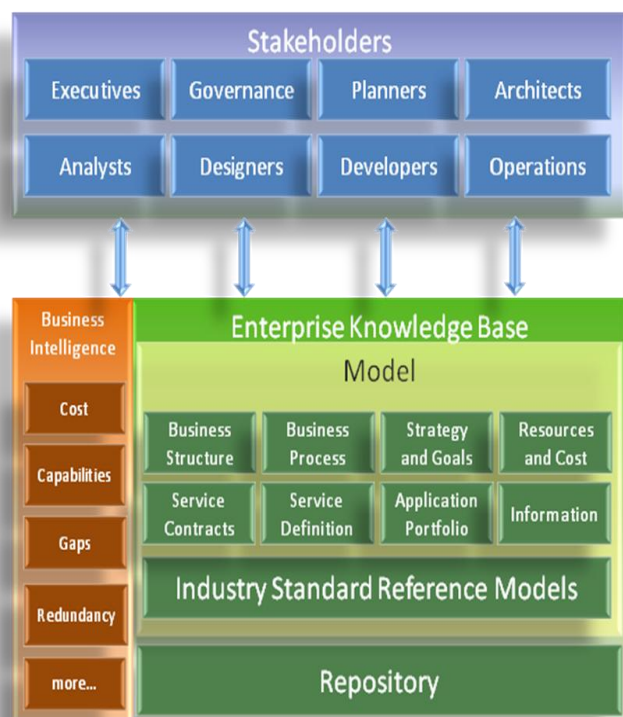
Business and IT Alignment for Executives
Dependency Knowledge for Architects

Many enterprises are challenged to articulate their business strategy and align their IT capability to meet their business goals. The solution to this problem is a framework for continual enterprise evolution and management using a living Enterprise Knowledge Base.

enVerse® is an enterprise-scalable model driven framework designed to unlock the full power of Enterprise Architecture and provides intelligence for a variety of decision makers who need IT systems to help execute Business Transformation.

Unlike siloed solutions that fail to offer enterprise-wide visibility of technology, people and processes, *enVerse*® offers an Enterprise Knowledge Base solution and Strategy that accelerates the scale and pace of business transformation.

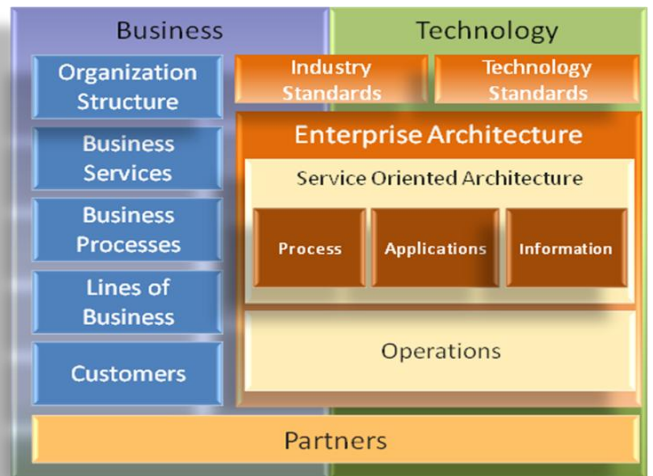
What is *enVerse*®?



enVerse® is a standards-based model driven framework for continual enterprise evolution, management and collaboration. Business and IT organizations, through the use of the *enVerse*® Enterprise Knowledge Base, can now address Strategic IT Planning, Business & Technology alignment, and Business Transformation.

enVerse® comes pre-packaged with extendable Industry Standard Reference models. This leverages thousands of person-hours of industry knowledge and expertise and incorporates standard architectures and best practices to support Enterprise Agility to address increasingly complex market and technical challenges. The foundation for *enVerse*® incorporates The Open Group Architecture Framework (TOGAF) to provide a toolset for capturing Process, Information, and Application capabilities.

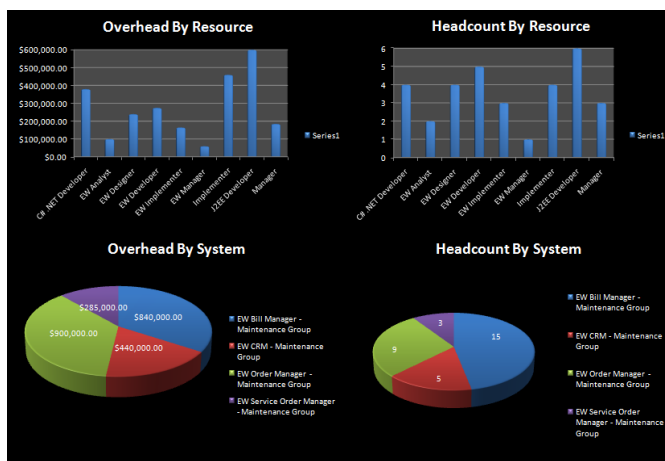
Impact Analysis for IT Governance
IT Portfolio Optimization for IT Planners



enVerse[®] enables a Model Driven Enterprise. Collaboration, Planning, Development, Execution, Ongoing Operations and Governance are managed in the Enterprise Knowledge Base. Capture the following types of information about the business:

- Organizations and their responsibilities
- Business processes
- Information entities
- Application Capabilities
- Service Interface specifications
- Service Contract Architecture
- Policies that govern the business

Create relationships between the organization's information and the pre-packaged Reference Model and unleash a powerful enterprise architecture with new and unprecedented capabilities.



Analyze, holistically, any area of your company, at any layer of detail and retain these understandings in a living, enterprise knowledge base.

- Produce higher quality SOA Service Contract designs
- Produce higher quality software in less time and at a reduction in cost
- Manage/Maintain architectural assets, including SOA services
- Use the architecture information to make better governance decisions about the business
- Reduce Risk (Improved standards compliance)

enVerse[®] supports enterprise evolution and management through the use of the Reference Models and Enterprise Knowledge Base. Contact us if you are interested in learning more about how to create a Model Driven Enterprise that supports Enterprise Agility, addresses Strategic IT Planning, aligns Business and Technology, and transforms Business.

AutoMagicKB
 +1.720.323.4097
info@automagickb.com

Canonic
 +1.866.783.8204 x101
info@canoniccorp.com